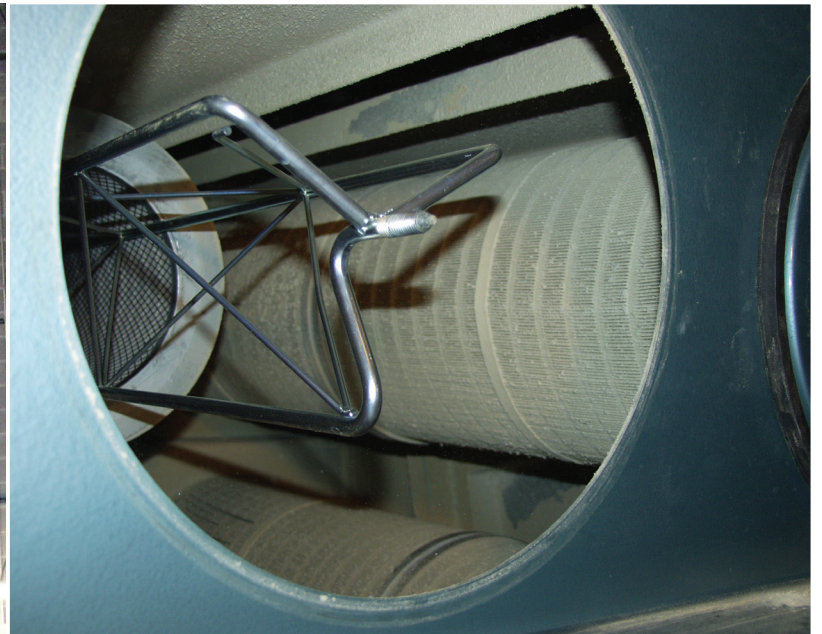
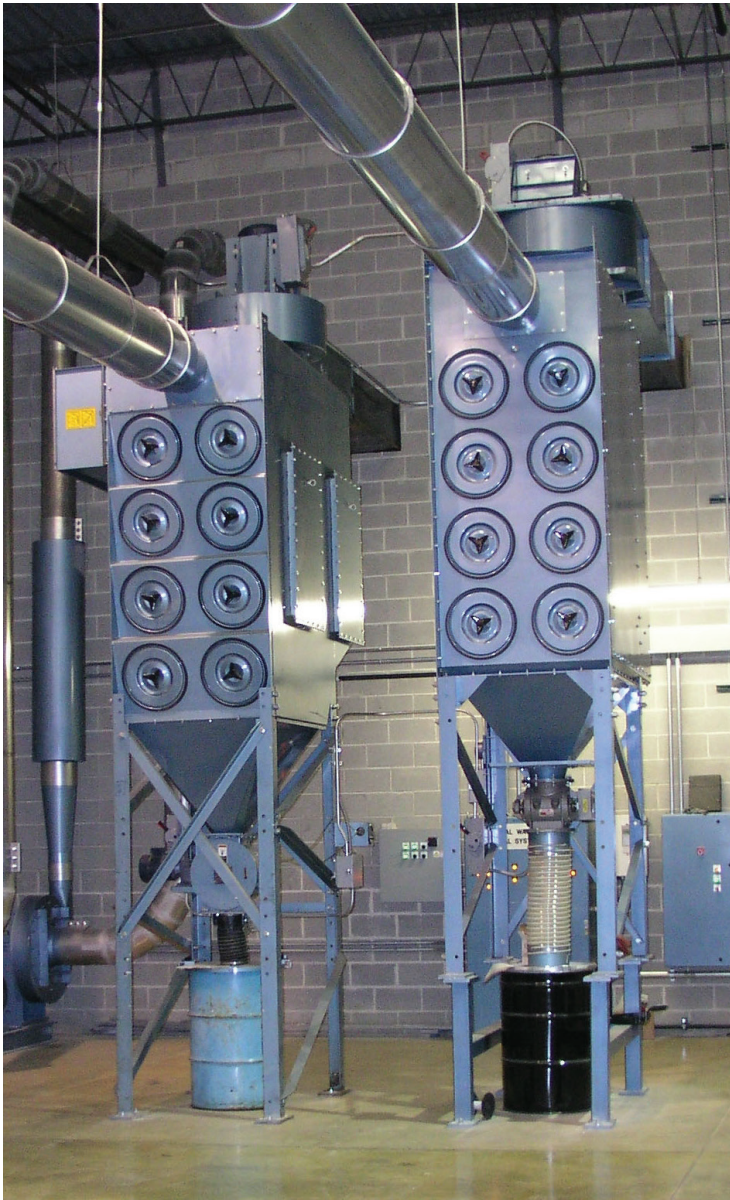




The industry leader in
trim and matrix removal

THE FIRST DUST COLLECTOR LINE ENGINEERED FOR TRIM SYSTEM PERFORMANCE, SAFETY AND RELIABILITY



PAC dust collectors efficiently remove entrained particles from the trim collection air stream – non-stop.

We've always been proud of the high quality reputation of our trim systems and equipment.

And we've specified hundreds of installations with dust collectors. But whenever that occasional maintenance call came in, it wasn't about sticky label matrix at the infeed (no problem), the inline cutter (no clogs) or the air separator (smooth sailing), it was the dust collector. The finest of what was available was okay for woodworking, but we but we wanted something better that would stand up to the demands of trim and waste handling.

Our engineers got together and thought about the ideal dust collector. It would run non-stop with almost no maintenance, and with as little energy as possible. Access would be safe and easy. It would fit small spaces with a low profile on a small footprint. It would grow with the installation. And it would work and work and work — just like it's supposed to — indoors or outdoors. Then we built it.

This is the first line of dust collectors engineered specifically to take full advantage of the capabilities of our trim systems. The performance is remarkable and we invite you to see for yourself at our test center, where it operates in a complete full-scale trim system.

We look forward to seeing you,



Tom Embley, CEO PE
Precision AirConvey Corp.



PAC engineers skillfully manage installations with the speed, precision, care and safety that comes only from more than 30 years of experience.



See a live action demonstration of this dust collector in operation as part of a complete trim handling system at our extraordinary testing laboratory.



Modular Design

PAC engineers devised a breakthrough, modular design concept that enables additional filter capacity to be added (or removed) to accommodate changes in the process or dust load without requiring the purchase of an entire, new unit.



Savvy Ductwork

PAC installs precision engineered ductwork in logical configurations that support pressure levels and promote the smooth flow of conveying air using the least amount of horsepower possible.



Filter Plenum

PAC offers a filter plenum dust collection system for light-duty applications where line downtime, maintenance, hygiene and automation are secondary to economy.



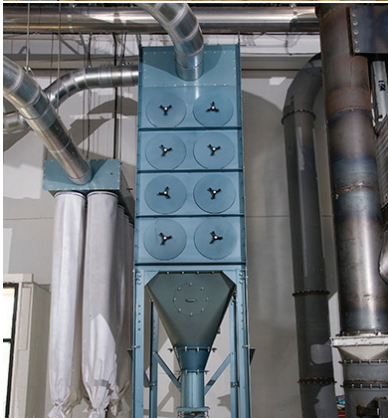
Outdoor Installations

PAC dust collectors come weather protected for outdoor installations with a choice of colors.



All-External Maintenance

Maintenance PAC includes an easy-to-use control panel that features a 110 volt, solid-state timer with adjustable pots, inside a durable steel enclosure that meets tough NEMA 4 standards.



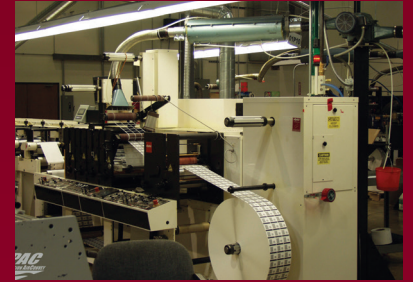
Air-Tight Connection

This proprietary hopper design features a slide gate valve to create a sealed, air-tight connection with a 55- or 20-gallon drum, permitting the agglomerated dust and other particles to be easily emptied without shutting down the dust collector. An optional, high level indicator alerts staff when the drum approaches the fill level.



Easy Filter Access

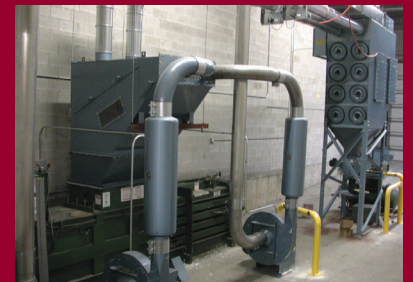
Filter maintenance and replacement is easily done by a single person from outside the collector and with no tools. The cartridge is slid out of the collector and the new cartridge is slid in, like closing a file drawer.



The PAC sonic jet dust collector is especially effective in label matrix removal systems, such as in this PSA installation at Diversified Labeling Solutions, Itasca, Ill.



PAC dust collectors excel in paper trim and waste management systems. At this Fortune 200 print to mail facility, paper trim is captured at the infeed and quietly evacuated for recycling while dust is removed and the clean air returned to the environment.



LIVE ACTION DUST COLLECTION IN FULL SCALE TEST LAB

Your PAC dust collector is specified to perform as one part of your complete trim and waste handling system.

In designing the dust collection stage, PAC engineers consider every facet of your process, from the type of material entering the infeed and the distance it travels through the ductwork, to the dust particle size, volume, temperature and an array of other parameters. Our line of seven standard models suits virtually any trim handling application. Please call a PAC engineer about custom sizes and options such as venting explosive dusts and adding rotary airlocks.

| Model No. | No. of Filters | CFM 1.3 Air/Cloth | CFM 1.8 Air/Cloth (Max) |
|-----------|----------------|-------------------|-------------------------|
| RJF12 | 12 | 4,000 | 5,500 |
| RJF16 | 16 | 5,300 | 7,300 |
| RJF24 | 24 | 7,900 | 11,000 |
| RJF32 | 32 | 10,600 | 14,600 |
| RJF36 | 36 | 11,900 | 16,500 |
| RJF48 | 48 | 15,800 | 21,900 |
| RJF64 | 64 | 21,100 | 29,300 |



Safety is Our Priority

Workplace safety regulations can be tricky. Guidelines from organizations such as OSHA and the NFPA change frequently, and are often superseded by local ordinances.

At Precision AirConvey, we rise above this confusion by going beyond standard requirements. Our products and systems are designed to not only match OSHA and NFPA regulations, but foster the highest possible level of workplace safety. Not because we have to, but because it's the right thing to do.



Your PAC dust collector is guaranteed to work as specified. With our experience, resources and passion for excellence, we stand proudly behind our engineering expertise and manufacturing skill.



465 Corporate Boulevard, Newark, DE 19702 USA
302.999.8000 | get-facts@airconvey.com
www.precisionairconvey.com

We've always been proud of the high quality reputation of our trim systems and equipment.

And we've specified hundreds of installations with dust collectors. But whenever that occasional maintenance call came in, it wasn't about sticky label matrix at the infeed (no problem), the inline cutter (no clogs) or the air separator (smooth sailing), it was the dust collector. The finest of what was available was okay for woodworking but we but we wanted something better that would stand up to the demands of trim and waste handling.

Our engineers got together and thought about the ideal dust collector. It would run non-stop with almost no maintenance and with as little energy as possible. Access would be safe and easy. It would fit small spaces with a low profile on a small footprint. It would grow with the installation. And it would work and work and work – just like it's supposed to – indoors or outdoors. Then we built it.

This is the first line of dust collectors engineered specifically to take full advantage of the capabilities of our trim systems. The performance is remarkable and we invite you to see for yourself at our test center, where it operates in a complete full-scale trim system.

We look forward to seeing you,

Tom Embley, CEO PE
Precision AirConvey Corp.



Outdoor Installations PAC collectors come weathered for outdoor installations. Choice of colors.



See a live action of this dust collector in operation as part of a conveying system in a ordinary testing lab.



Modular Design

PAC engineers devised a breakthrough, modular design concept that enables additional filter capacity to be added (or removed) to accommodate changes in the process or dust load without requiring the purchase of an entire, new unit.



Savvy Ductwork

PAC installs precision engineered ductwork in logical configurations that support pressure levels and promote the smooth flow of conveying air using the least amount of horsepower possible.



Filter Plenum

PAC offers a filter collection system for applications with long run time, maintenance, and automatic cleaning to economy.

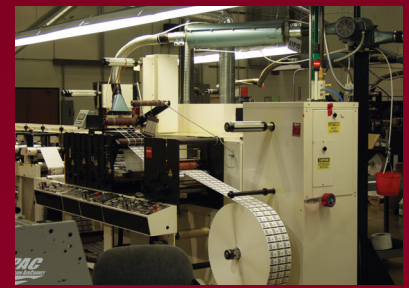


dust collector protected enclosures with a



All-External Maintenance

Maintenance PAC includes an easy to use control panel that features a 110 volt, solid-state timer with adjustable pots inside a durable steel enclosure that meets tough NEMA 4 standards. Notice how all serviceable components are mounted outside the casing to eliminate OSHA confined space entry requirements and promote easy maintenance.



The PAC sonic jet dust collector is especially effective in label matrix removal systems, such as in this PSA installation at Diversified Labeling Solutions, Itasca, Ill.

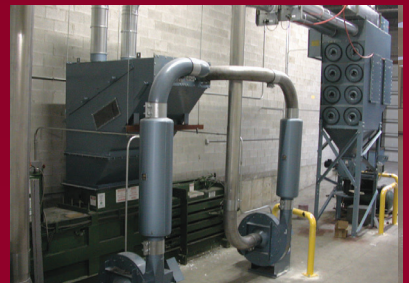


demonstration of a dust collector in operation showing complete trim capture at our extraordinary laboratory.



Air Tight Connection

Maintenance PAC includes an easy to use control panel that features a 110 volt, solid-state timer with adjustable pots inside a durable steel enclosure that meets tough NEMA 4 standards. Notice how all serviceable components are mounted outside the casing to eliminate OSHA confined space entry requirements and promote easy maintenance.



PAC dust collectors excel in paper trim and waste management systems. At this Fortune 200 print to mail facility, paper trim is captured at the infeed and quietly evacuated for recycling while dust is removed and the clean air returned to the environment.



Filter plenum dust collector system for light duty applications where line down-time, hygiene and safety are secondary



Easy Filter Access

Filter maintenance and replacement is easily done by a single person from outside the collector and with no tools. The cartridge is slid out of the collector and the new cartridge is slid in, like closing a file drawer



PAC engineers skillfully manage installations with the speed, precision, care and safety that comes only from more than 30 years of experience.