



The industry leader in trim and matrix removal

“STANDARD OF THE INDUSTRY”
“BULLET PROOF” “TIMELESS DESIGN”
“WORRY-FREE SYSTEM”

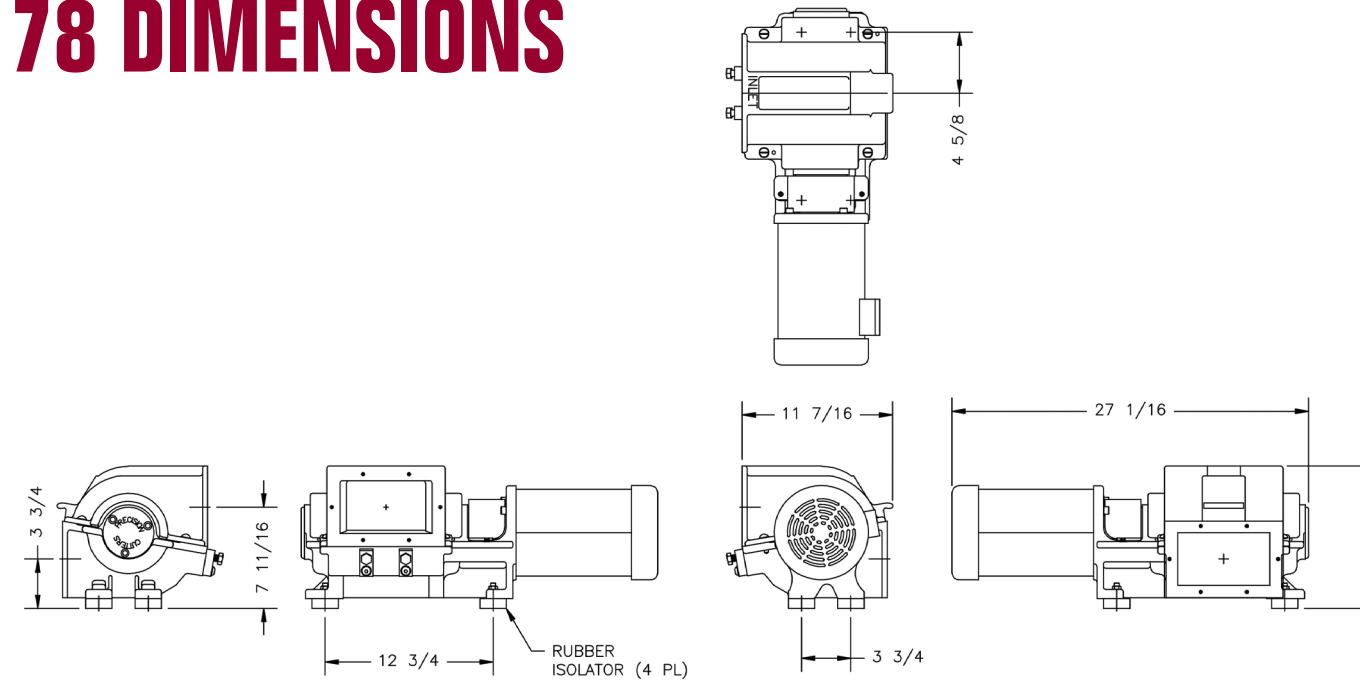
Our customers have used all these phrases over the years to describe PAC products. We're proud of our 30-year track record of performance and durability.

PAC trim cutters and granulators are a result of a brilliant yet simple design, improved over the years by continued lab testing; constant attention to new, improved and innovative manufacturing methods; and adherence to a strict quality control program.

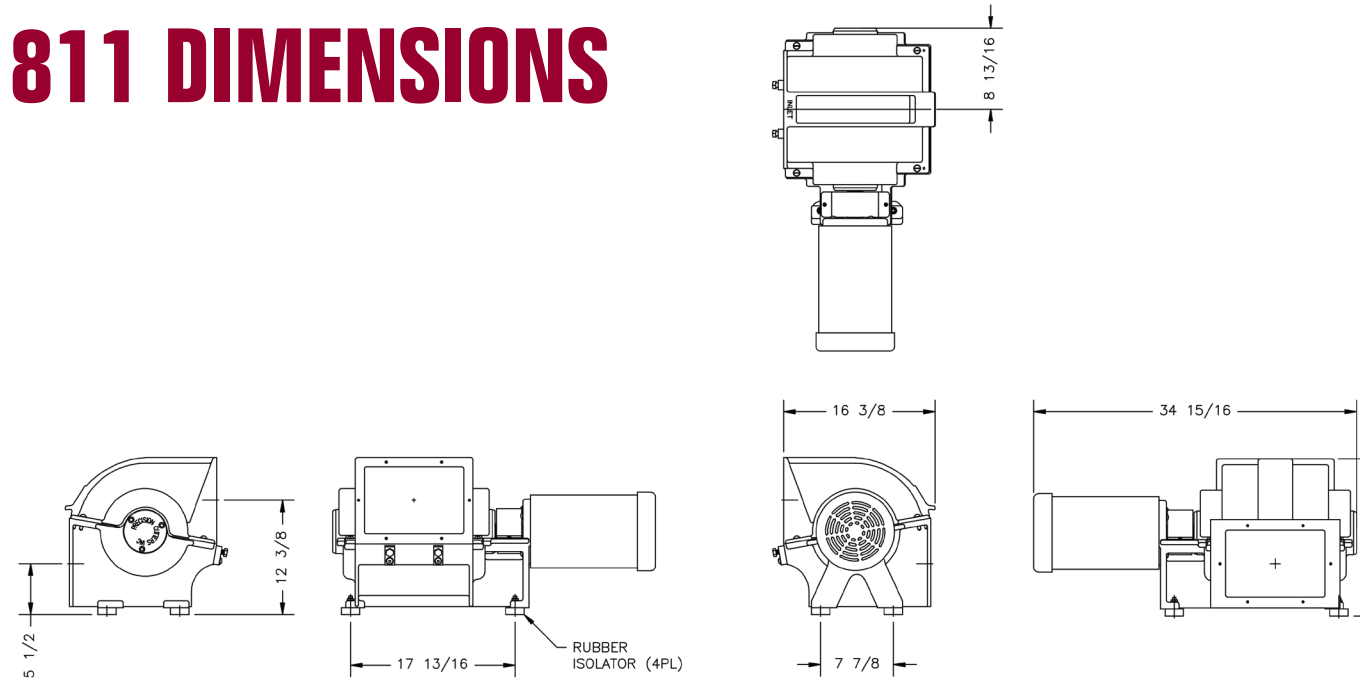
And, because we listen to what our customers have to say about us, we offer the widest variety of options in the industry. No matter what your need, we'll satisfy your requirements related to cutter/granulator sizes, knife materials, feeding arrangements, screen hole sizes, degrees of precision and maintenance options.

Whether you need PAC to retrofit a cutter into an existing system, or work with you on a complete trim removal system, our staff of professional engineers is ready to provide a guaranteed solution.

78 DIMENSIONS



811 DIMENSIONS



PRODUCT VARIATIONS

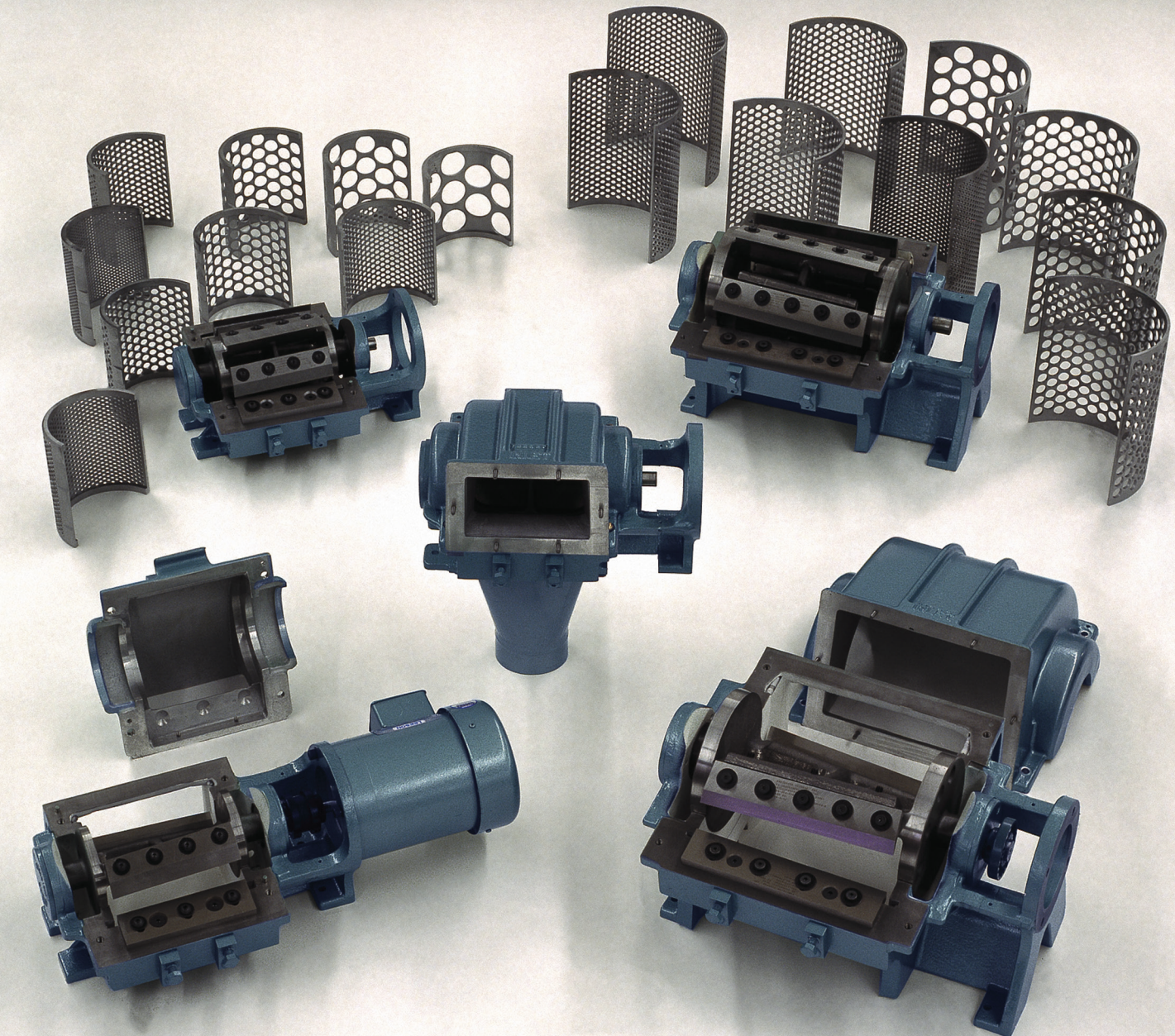
MODELS	TYPE	# ROTOR KNIVES	“STD” MOTOR HP	INLET/OUTLET	X LINE SIZE
78-FP	Cutter	2	1	4" x 7"	6"
78-FSP	Cutter	2	1	4" x 7"	6"
78-FP-6	Cutter	6	1	4" x 7"	6"
78-FSP-6	Cutter	6	1	4" x 7"	6"
78-GP-2	Granulator	2	5	4" x 7"	6"
78-GP-6	Granulator	6	5	4" x 7"	6"
811-FP	Cutter	2	2	8" x 11"	10"
811-FP-6	Cutter	6	2	8" x 11"	10"
811-GP-2	Granulator	2	5	8" x 11"	10"
811-GP-6	Granulator	6	7.5	8" x 11"	10"

NOTE: “BD” after model # indicates “Bottom Discharge” (Available in all models).

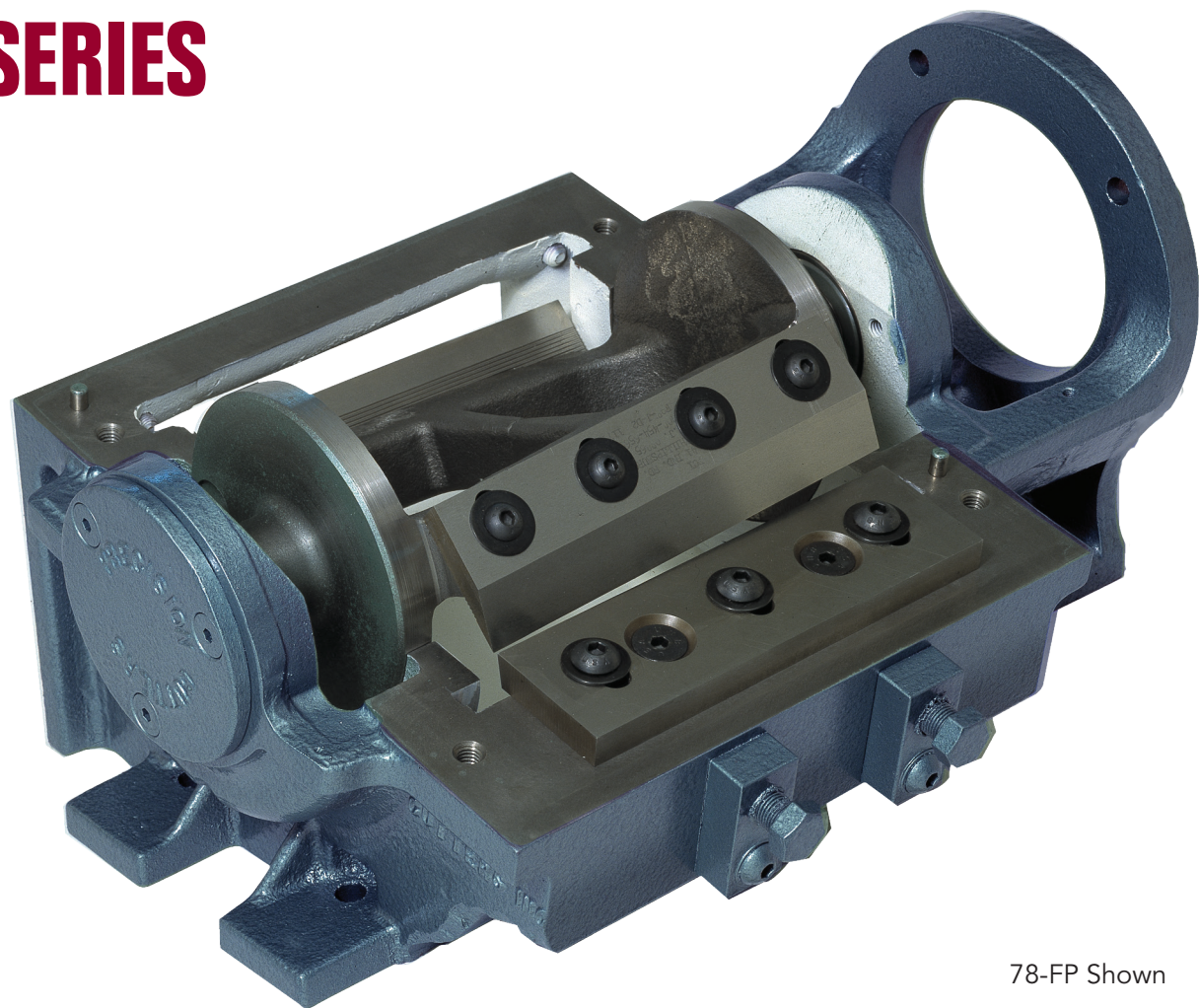


465 Corporate Boulevard, Newark, DE 19702 USA
 302.999.8000
 get-facts@airconvey.com | www.precisionairconvey.com

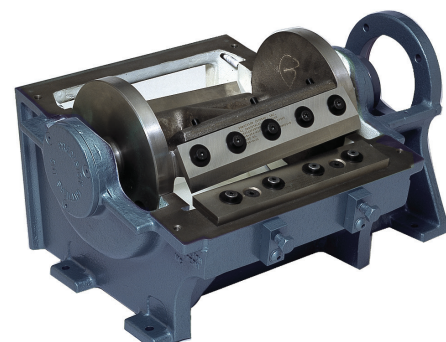
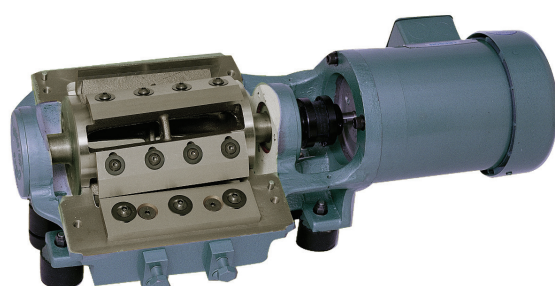
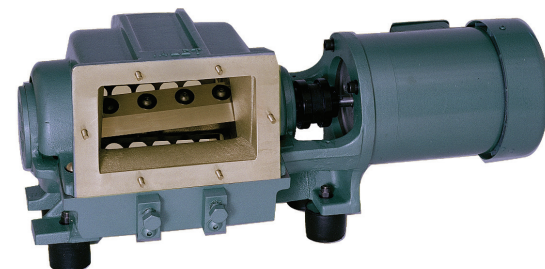
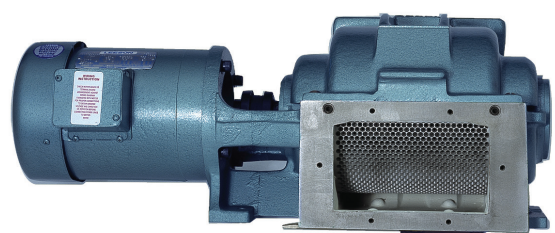
TRIM CUTTERS & GRANULATORS



78 SERIES



78-FP Shown



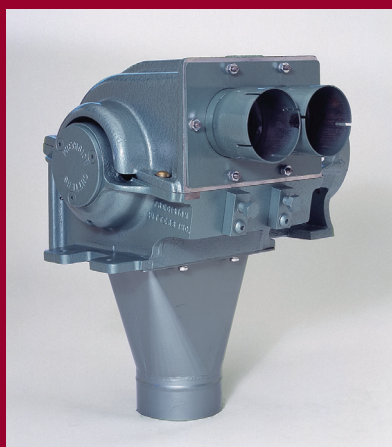
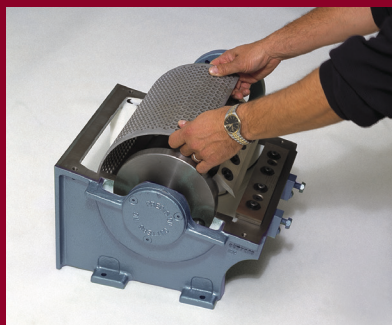
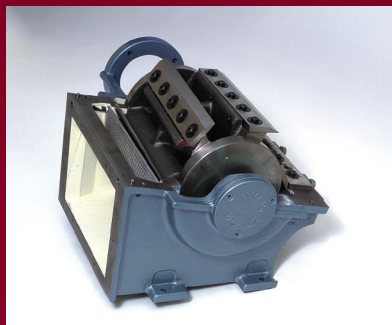
FEATURES:

1. Angled rotor knives to provide shock-free, efficient cutting and low noise levels.
2. "Wrap-free" performance due to shaftless cutting chamber and external rotor end disc.
3. Open box rotor for free passage of air and minimal pressure drop.
4. Cast aluminum top cover easily removed to provide complete maintenance access.
5. Large diameter end discs provide high rotor inertia for low speed applications.
6. Differential screw adjustment of bed knife allows for extremely precise cutting clearances between rotor knives and bed knife. (See table)
7. Class ABEC-7 super precision ball bearings. "Preloaded" with disc springs. No adjustment or lubrication of bearing is required. Mounted "outboard" to prevent contamination.
8. Flange-mounted motor provides most compact arrangement possible.
9. Cast-Iron housing, shear angle rotor, ribbed top cover and radiused corners all act to keep noise radiation to an absolute minimum. Sound enclosures only needed in extreme applications.
10. Optional: Easily replaceable, 180° granulation screen available in screen hole sizes: 1/8", 3/16", 1/4", 3/8", 1/2", 3/4", 1", 1-1/2", 2". (special sizes on request)
11. Flexible mounts for isolating cutter from mounting surface to protect cutting clearance.
12. Component materials:
 Housing cast iron
 ROTOR ductile iron, dynamically balanced
 Top cover (hood) cast aluminum
 Knives available in AISI D-2
 AISI A-11 (CPM-10V)
 Tungsten Carbide

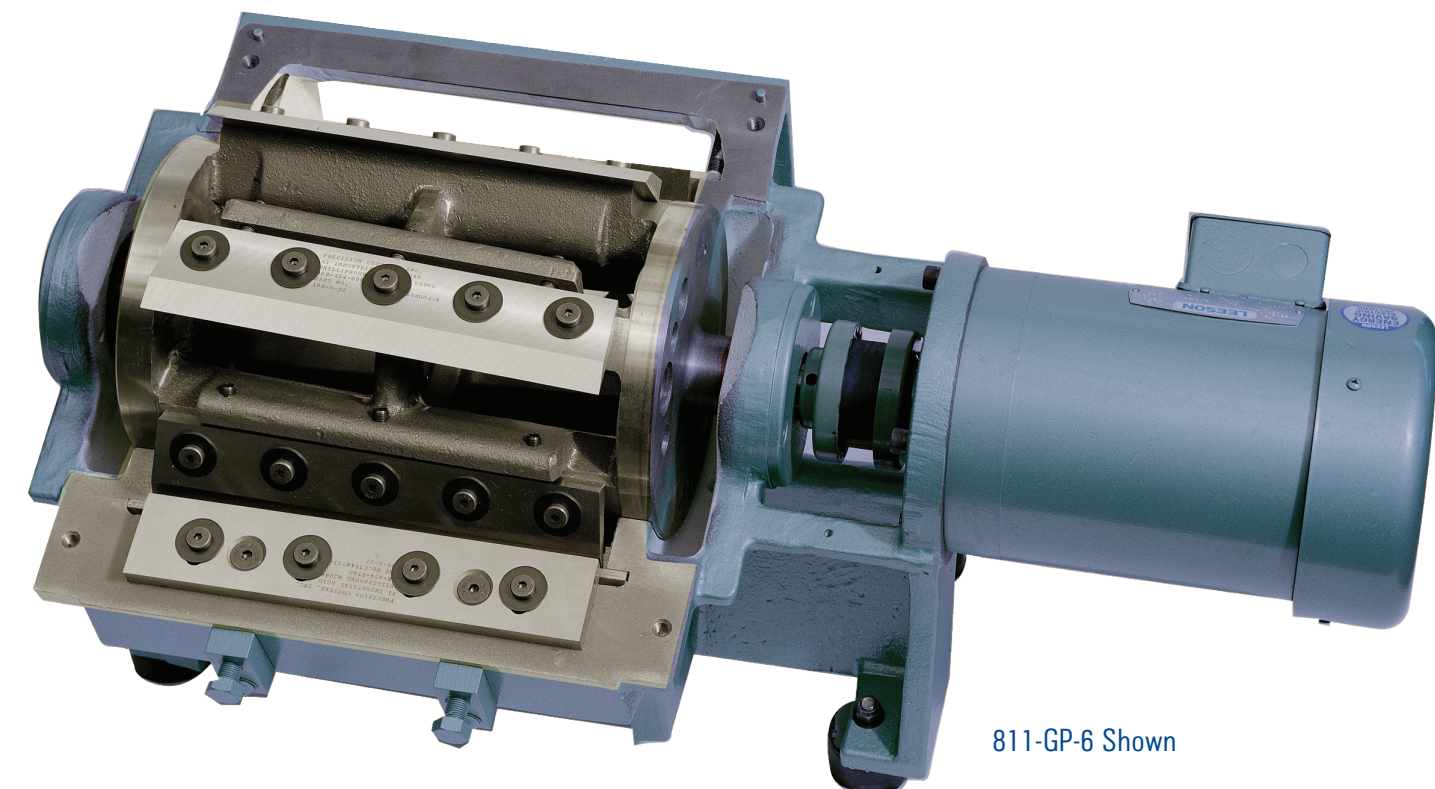
PRECISION CUTTING CLEARANCES

CLASS OF CUTTER	CUT	SCORE	CUTTING CLEARANCE
FSP, spin grind in cutter	1/2 mil film	1/4 mil	< .00025"
FP, GP, spin grind in cutter	1 mil film	1/2 mil	< .0005"

NOTE: See maintenance instructions for complete description and procedures. Every unit inspected and shipped with "film score" (see table) to verify accuracy.



811 SERIES



811-GP-6 Shown

